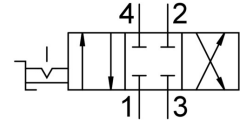
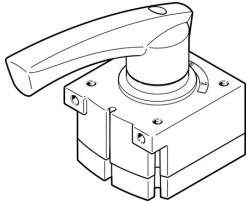


# Hand lever valve VHER-H-B43C-B-N14

Part number: 3520389

FESTO



## Data sheet

Feature	Value
Valve function	4/3, closed
Actuation type	Manual
Width	56 mm
Standard nominal flow rate	1500 l/min
Pneumatic working port	NPT1/4-18
Operating pressure	0 bar ... 10 bar
Information on operating pressure	Vacuum operation at connection 3 only In dual pressure mode, the pressure at connection 1 must be higher than at connection 3.
Structural design	Rotary gate valve
Nominal width	8 mm
Type code	VHER
Exhaust air function	With flow control option
Application note	Operate by hand only
Sealing principle	Hard
Type of control	Direct
Flow direction	Non-reversible
Symbol	00995942
Underlap	yes
Switching position indication	with accessories
Operating medium	Compressed air as per ISO 8573-1:2010 [7:4:4]
Information on operating and pilot media	Operation with oil lubrication possible (required for further use)
Corrosion resistance class (CRC)	2 - Moderate corrosion stress
Temperature of medium	-20 °C ... 80 °C
Ambient temperature	-20 °C ... 80 °C
Actuating torque	2 Nm
Product weight	510 g
Type of mounting	Optionally: Front panel mounting With through-hole
Pneumatic connection 1	NPT1/4-18
Pneumatic connection 2	NPT1/4-18
Pneumatic connection 3	NPT1/4-18
Pneumatic connection 4	NPT1/4-18
Note on materials	Free of copper and PTFE RoHS-compliant
Seals material	NBR

<b>Feature</b>	<b>Value</b>
Housing material	Die-cast aluminum
Lever material	Die-cast aluminum